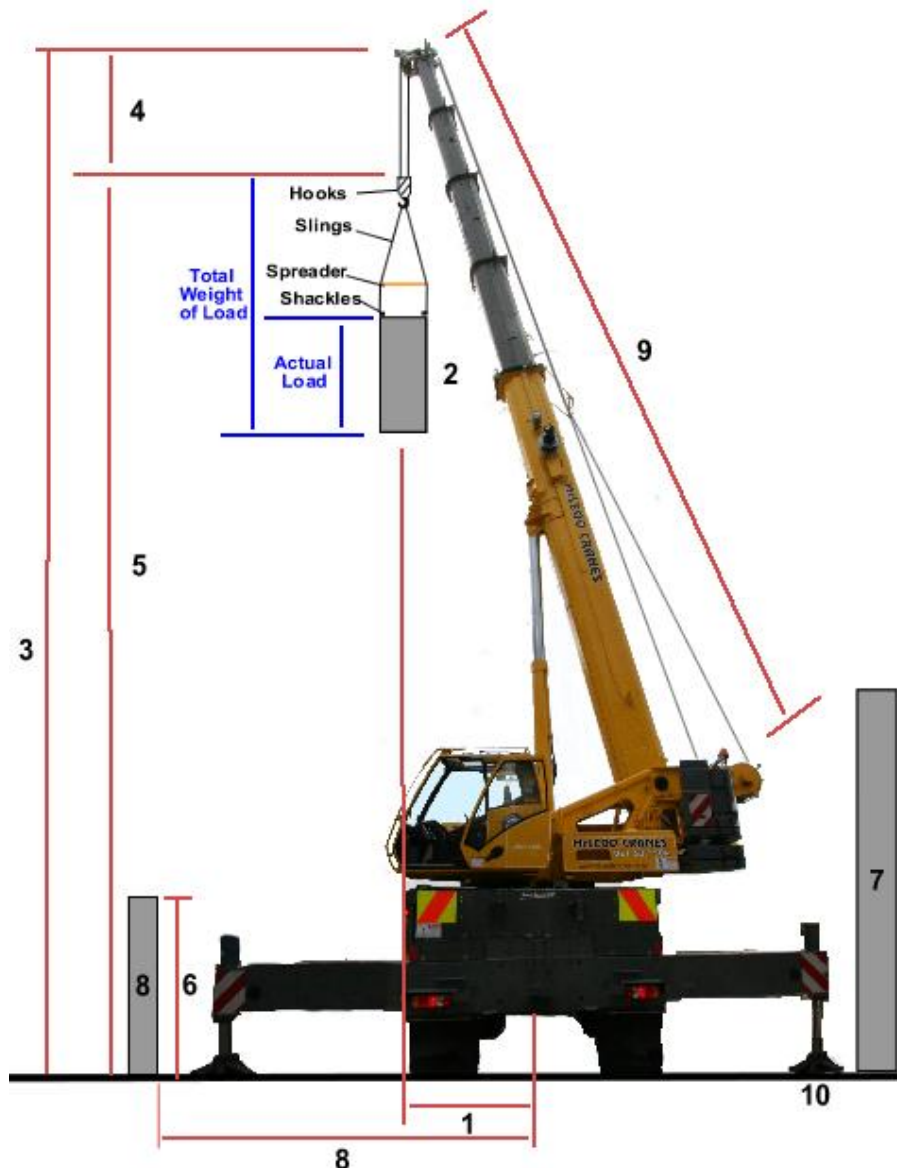


Choosing the right crane

In selecting the right crane for the job. Consider the following points:

1. What is the Maximum radius from the centre of slew.
2. What will be the Total weight of the load*
3. Is Clearance height under ceiling (if any) an issue.
4. Allow for distance from jib head to the hook.
5. Allow for the hook height required with associated lifting equipment..
6. Allow for the height of obstructions between crane and load.
7. Allow for obstructions which may hinder the counterweight when slewing.
8. Allow for obstructions the crane may need to work around when setting up.
9. Consider what Boom length will be required.
10. Ensure the ground can support the crane.
11. Allow for how the crane will access and leave the site.



* Please note that Total Weight of Load is obtained by adding:

- Actual Load Weight
- + Crane Hook Block
- + Slings, Spreaders, Shackles
- + any other lifting attachment.

The total of which must not exceed any load capacity listed in any Crane Rating Chart.